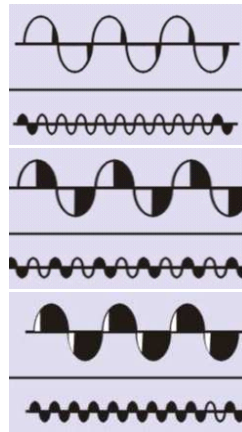
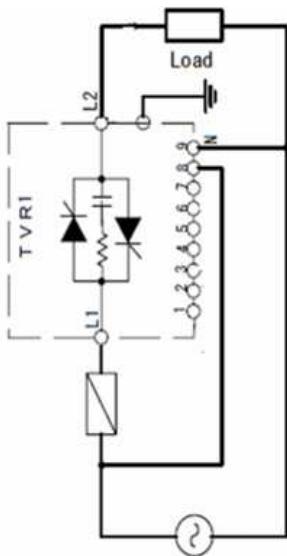


Thyristor single-phase power regulator type TRV

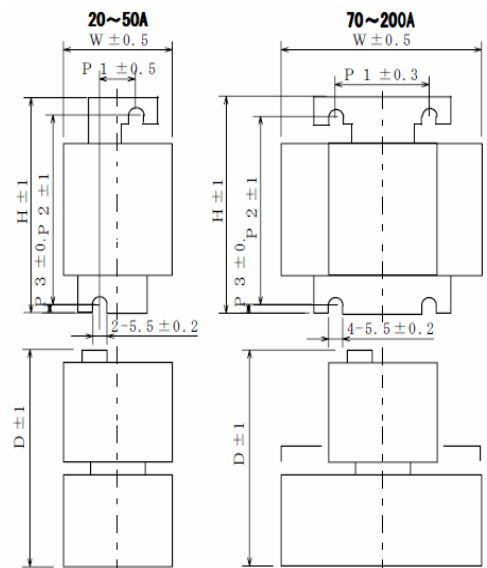
Features :

- Phase control and zero-cross switching cycle control;
- Input: 0/4 ÷ 20mA, 1 ÷ 5V, 0 ÷ 5/10V, open collector 5V/3mA DC, SSR 12V/3mA DC;
- Current : 20A, 30A, 50A, 70A, 100A, 200A;
- Capable of selecting phase control or zero-cross switching cycle control even by contact proportion and voltage pulse (SSR driving voltages) input;
- Output soft-start, slow-up, and slow-down functions equipped as standard (0.0 to 25.0s);
- Free power supply (100 VAC to 240 VAC), automatic recognition of supply frequency 45 to 65 Hz;
- Display 7-segment of input values, output values, and parameters;
- Temperature: -10 ÷ 40°C, Humidity max. 90% (not condens);

Wiring:



Dimension (mm):



Order code: TRV □□□:

Current	020	20 A
	030	30 A
	050	50 A
	070	70 A
	100	100 A
	200	200 A

	W	H	D	P1	P2	P3
20A	50	192.5	128	24	181	4
30A	50	192.5	128	24	181	4
50A	60	192.5	154	28	181	4
70A	110	192.5	154	75	181	4
100A	155	192.5	154	75	181	4
200A	111	302.5	180	75	289	6

Our company can provide electric motors and the equipment of control / measurement with output signal for the command power regulator.