



### Ball valve with pneumatic actuator

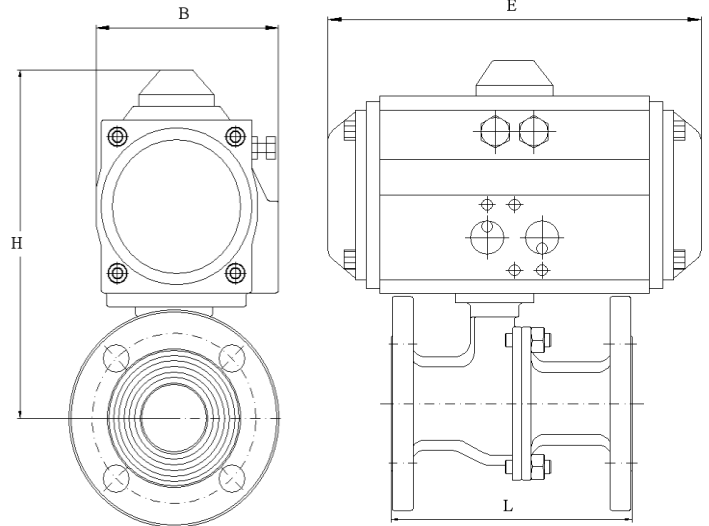
**Features :**

- Flanged ball valve DN 25, DN 40, DN 80;
- Pneumatic actuator with double acting;
- Distributor 5/2 wege / 10bar with solenoid valve 230V/4VA/50Hz;
- 2 mechanical limit switches in PMB-box with indication ON/OFF;

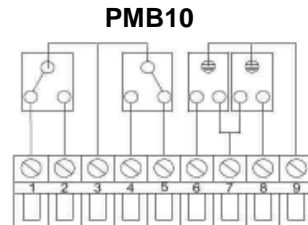
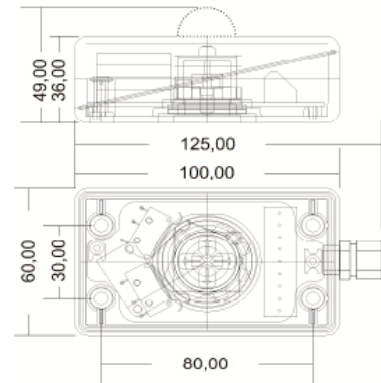
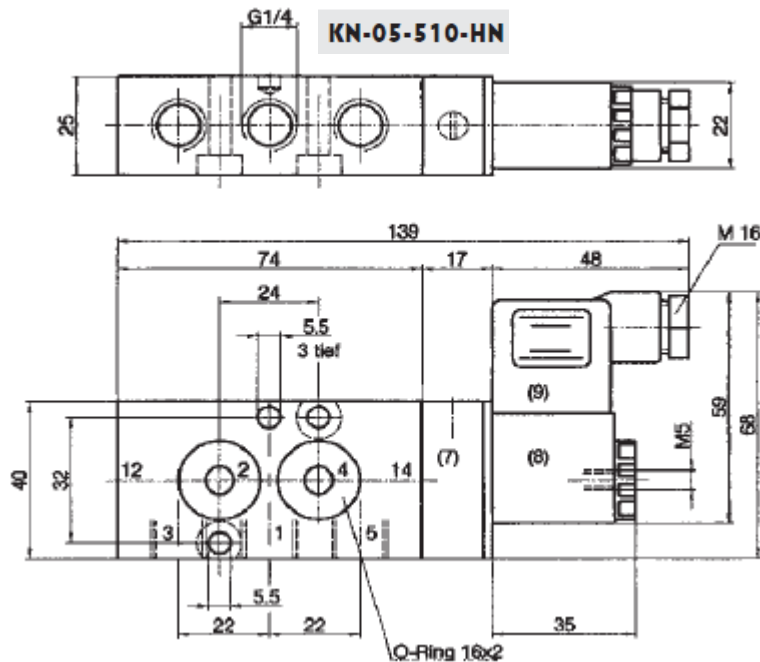


**Technical specification :**

Body, flange, pneumatic actuator	
Ball valve	Stainless steel 1.4408
DN/PN	25/40, 40/40, 80/16
Seat	TFM-1600
Pneumatic actuator	Double acting
Operating temp.	Max. 180°C
Distributor solenoid valve KN 05-510-HN	
Housing distributor	Aluminum
Ports connection	G1/4; flange NAMUR 5/2
Electrical connection	Connector DIN43650 B
Operating pressure	3 – 10 bar
Operating temp.	-10/70°C
Coil	23-SP-011-427
Coil specification	230V/4VA/50Hz
Limit switches PMB 10	
Operating	2 mechanical switches
Switch	Crouzet 831704
Electrical specification	24-250V/max. 2.5A
Protection class	IP 67
Indication	ON/OFF



DN	L (mm)	H (mm)	E (mm)	B (mm)
25	125	139	122	65
40	140	184	168	83
80	180	248	262	111



**Order code :**

Tip	DN	PN
PA 40 DA	25	40
PA 63 DA	40	40
PA 92 DA	80	16