

Accessories manometers



Valve :

Without/with test connection M20x1.5;
 Connection : 1/2NPT (male nut), G3/8, G1/2;
 Material : brass, steel, stainless steel;
 PN : 250/400bar;
 Temperature : -10÷120°C/-20÷200°C;



Cocks :

Without/with test connection M20x1.5;
 Connection : G1/2, G1/4, G3/8, thread
 male, female or nut;
 Material : brass;
 PN : 6/16/25bar;

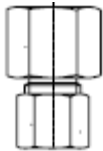


Siphons :

Forms : U, O;
 Connection : G1/2, G1/4;
 Material: steel, stainless steel;
 PN: 25/63/80/100/160 bar
 Operating temperature :
 120/300/400/500°C;

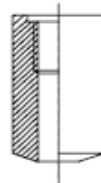


Diverse



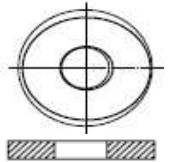
For pipe-connection :

Connection : G1/4x6mm,
 G1/2x6mm, G1/2x8mm,
 G1/2x10mm, G1/2x12mm;
 PN : 100/400bar;
 Material : steel;



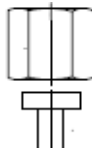
Welding nut:

Conection : G1/2x30mm,
 G1/2x50mm, G1/2x80mm
 G1/2x100mm;
 Material : steel;



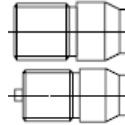
Flat sealing:

G1/4/M12x1.5
 G1/2/M20x1.5
 400/1600bar
 cooper, fibre,
 stainless, PTFE



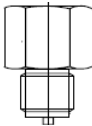
Union nut:

Connection: G1/2, G1/4, M20x1.5;
 PN : 250/600/100 bar;
 Material: brass, steel, stainless;



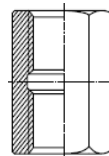
Welding connection:

Connection : G1/4, G1/2 ,
 M20x1.5 , left / right;
 PN: 400/600/1000bar;
 Material: steel, stainless;



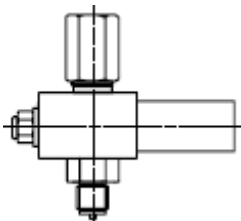
Adaptor :

Connection : G1/2, G1/4, G1/8,
 G3/8, G3/4, M12x1.5, M20x1.5,
 Thread male/female;
 PN : 250/1000bar;
 Material : brass, steel, stainless;



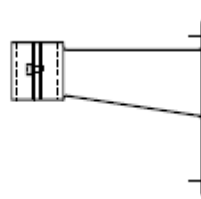
Union DIN 16283:

Connection: G1/2, G1/4, M20x1.5, left / right;
 PN: 250/600/100 bar;
 Material : brass, steel, stainless steel;



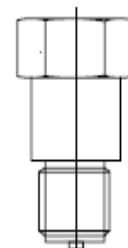
Protection gauge:

Connection : G1/2;
 Pressure range:
 10÷700mbar, 0.4÷2.5bar
 2÷6bar, 5÷25bar,
 20÷60bar, 50÷250bar,
 240÷400bar;
 Material: brass, stainless;



Support :

DIN 16 281;
 Dimension :
 60/100/160mm;
 Material : aluminum,
 stainless steel;



Adaptor support

DIN 16 281;
 Connection :
 G1/2, M20x1.5;
 PN: 250/600bar;
 Material: brass,
 steel, stainless;